



Project: Security Groups

Security enhancement for
Business Express Release 7

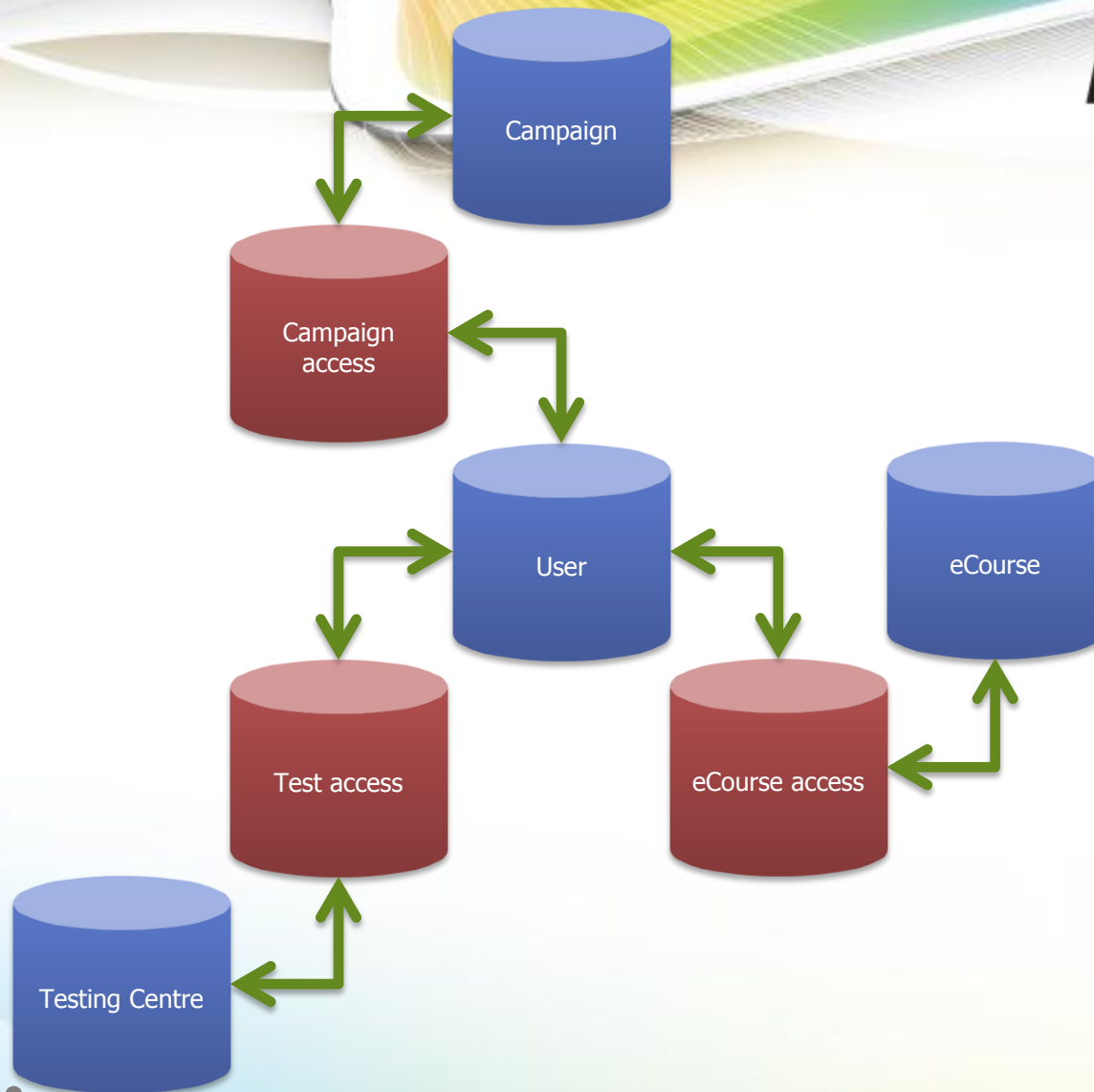
2012-01-27

Business *express*

Current

Currently a user is allocated to individual resources within BE.

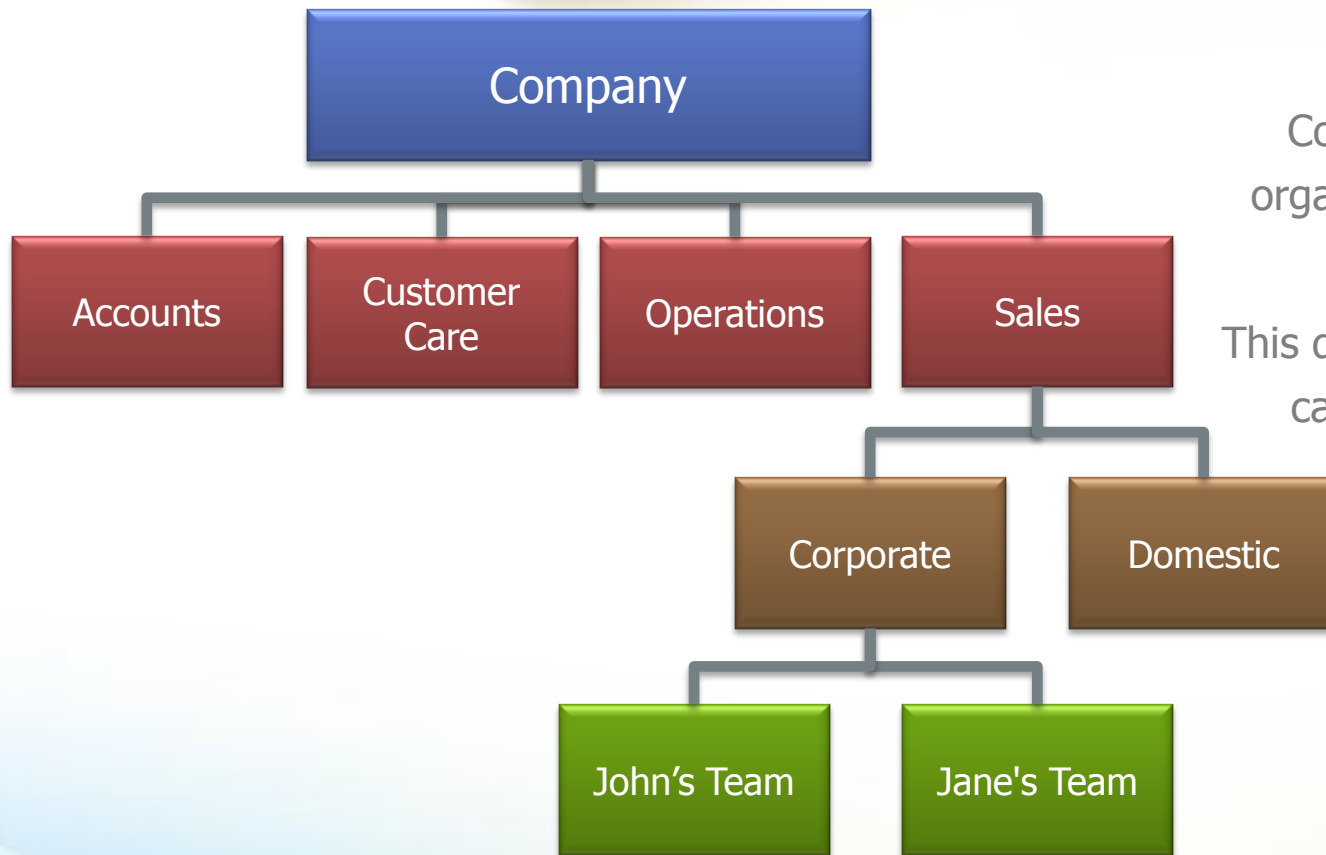
The security is managed separately in each module.



Hierarchy

Companies are usually organised into hierarchies.

This drawing of a hierarchy is called an Organogram

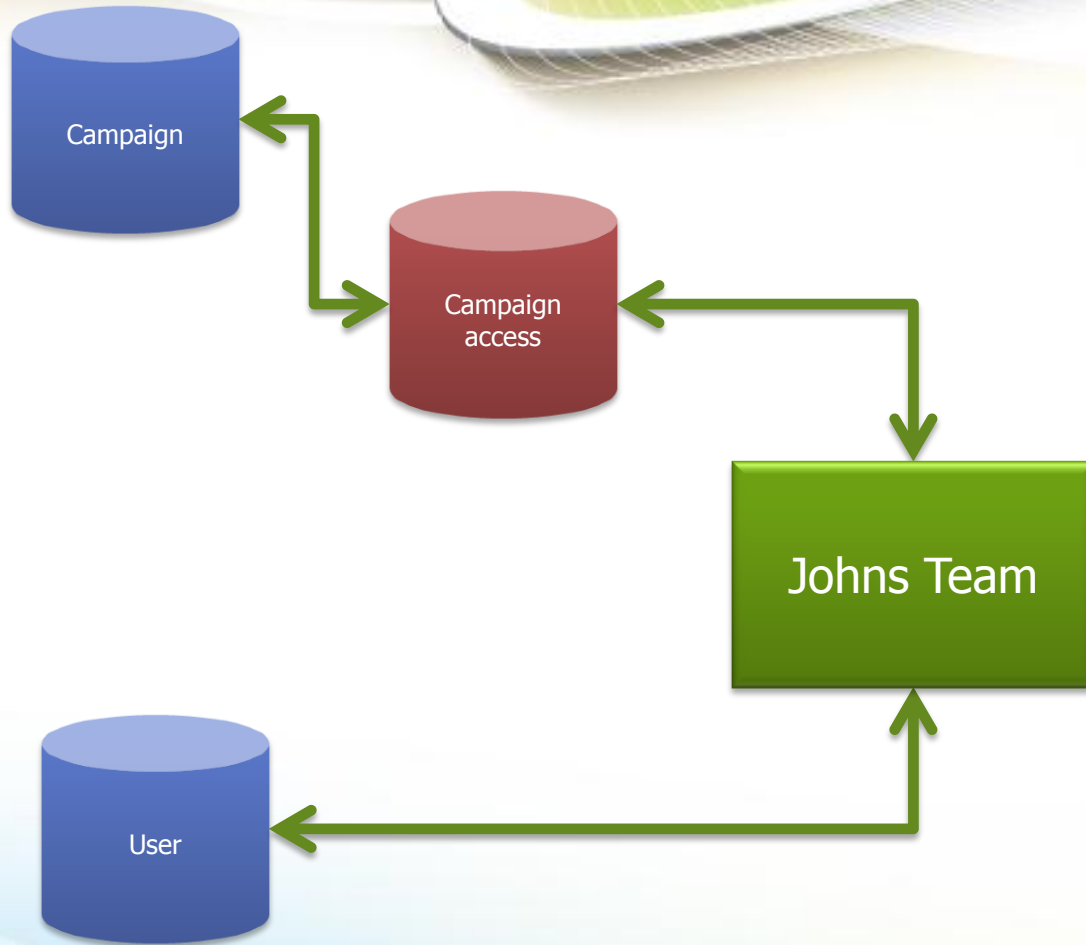


Business epress

New

Access to resources will be given to groups, not to individuals.

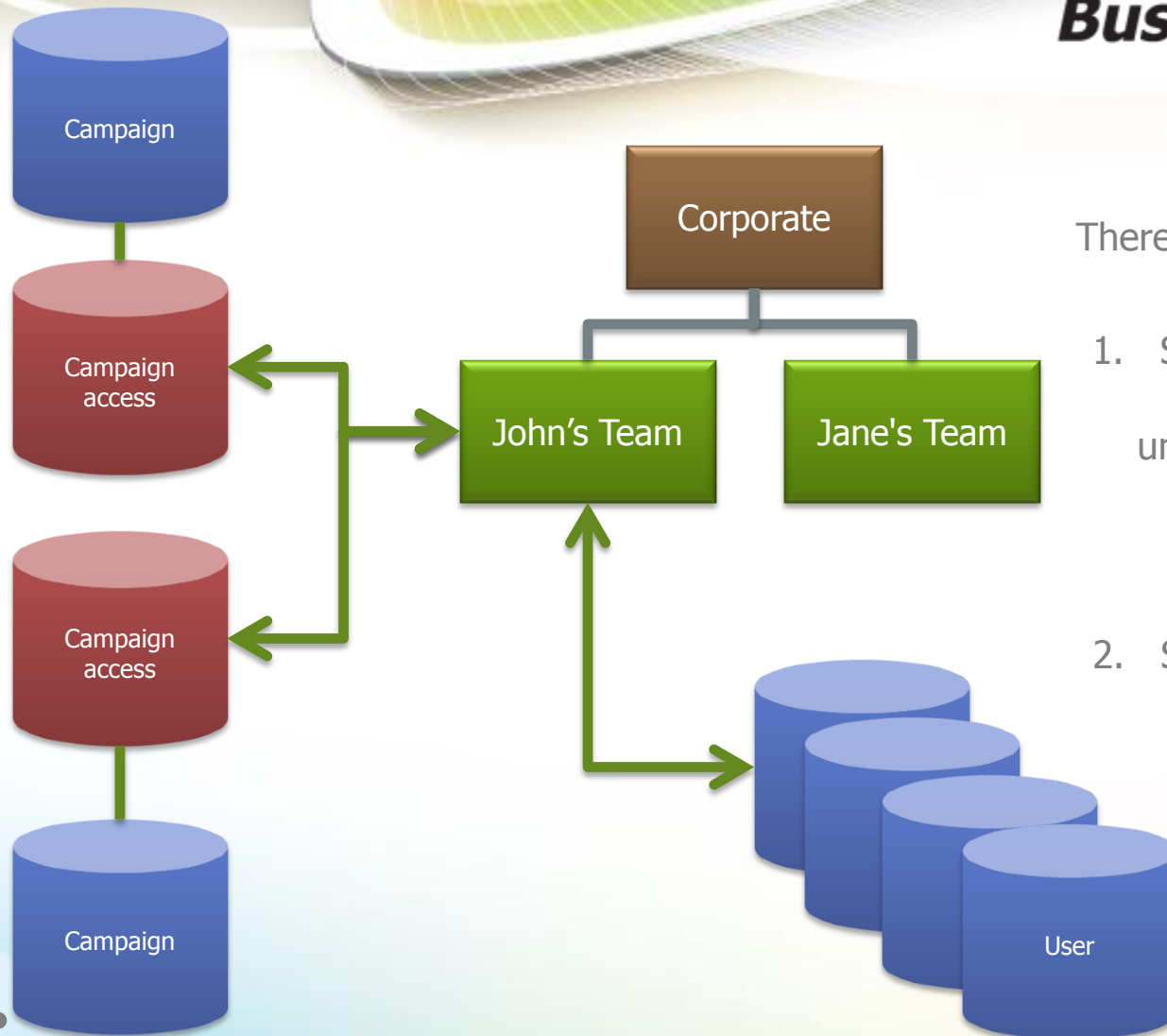
Each group will be an item in the Organogram



Why?

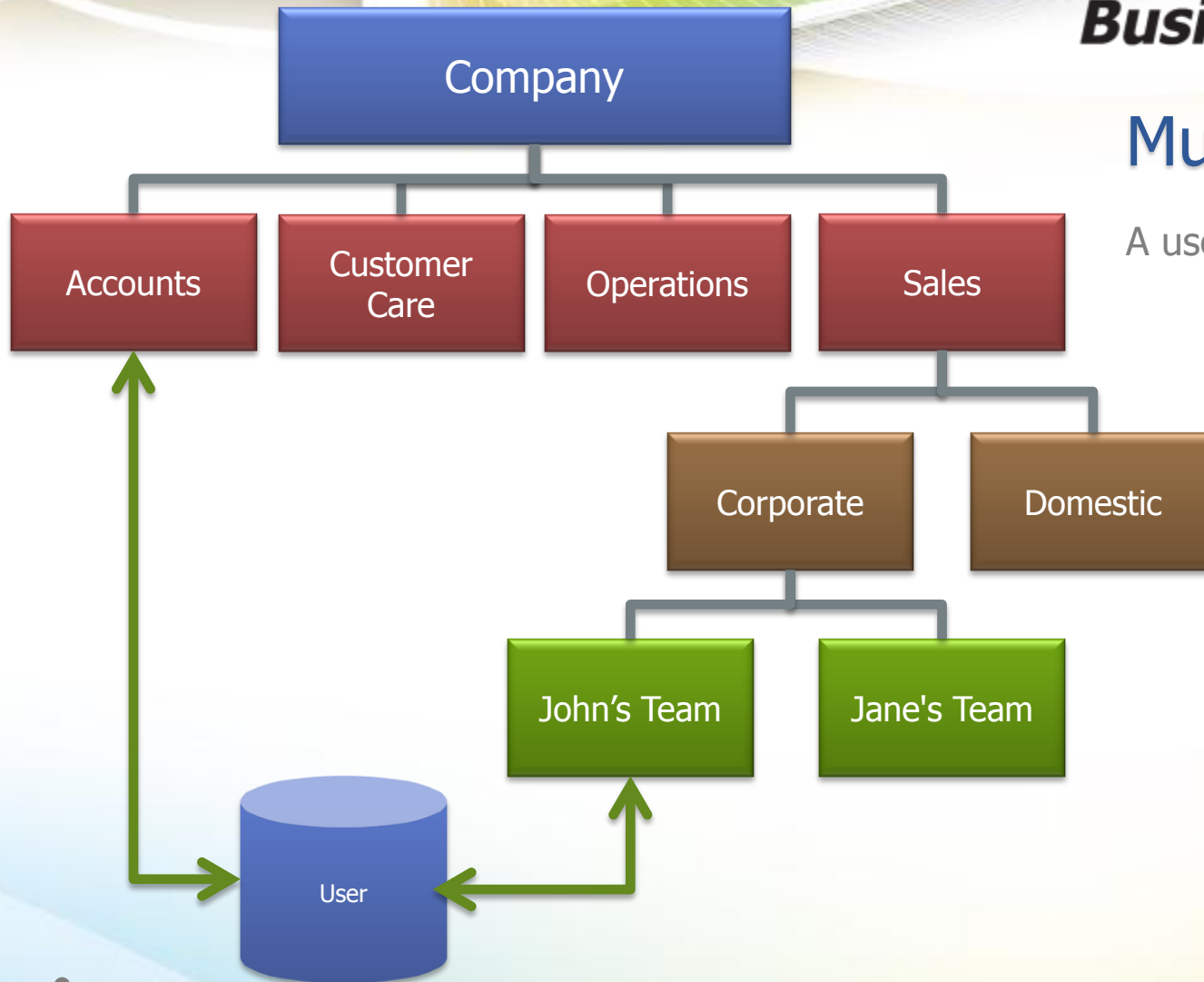
There are two huge advantages.

1. Standardisation of security makes it easier to understand permission based on role rather than individual.
2. Speed of user creation will be greatly enhanced as adding to a group will be faster than granting individual access.



Multiple Groups

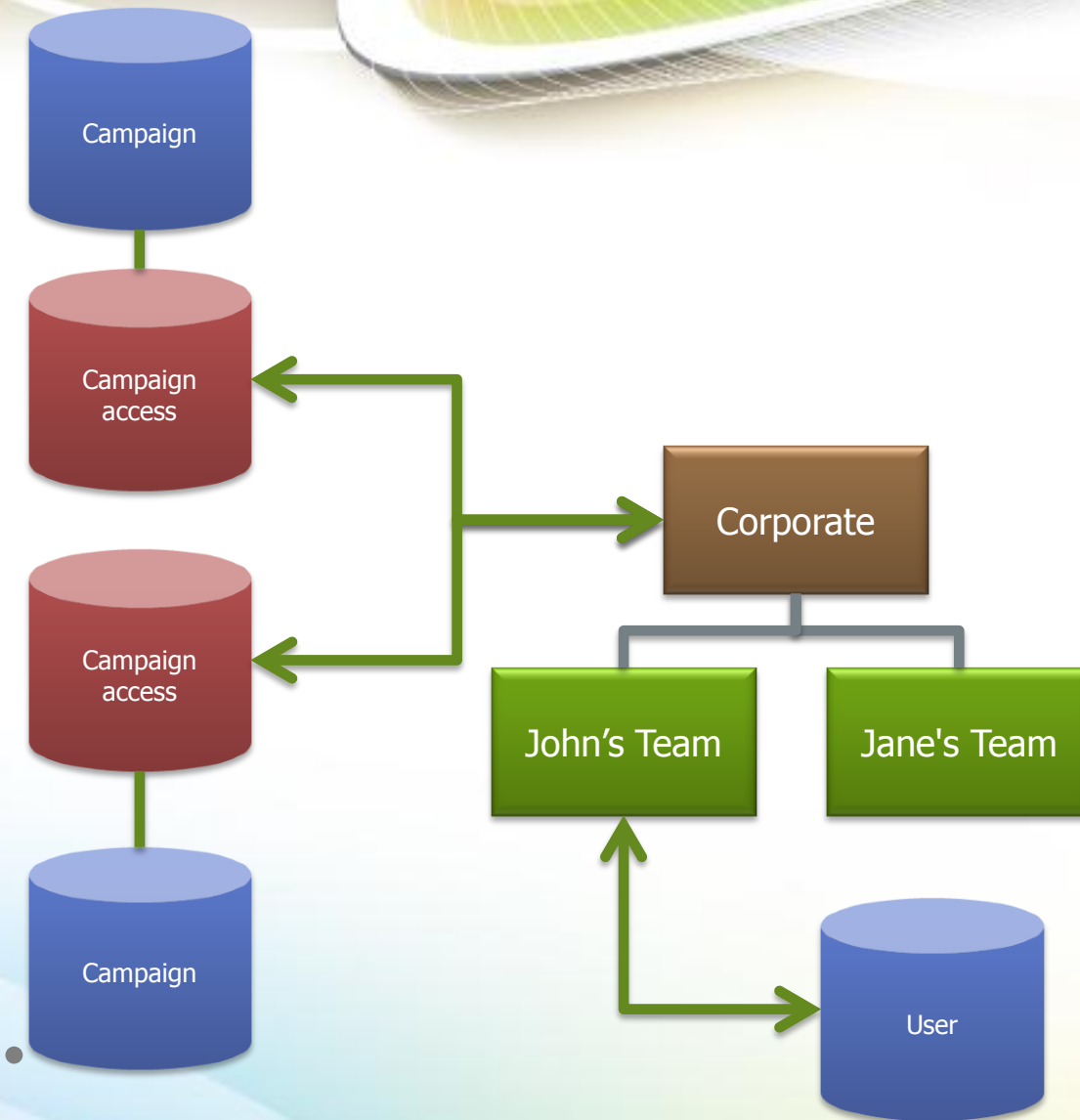
A user can be a member of multiple teams.



Cascading Permissions

If permission is given to a parent group, all children groups will inherit the permissions of the parent.

i.e. Grant "Corporate" access and all members of John and Jane's teams will be granted permission



Modules Affected

This change will affect how multiple modules interact with BE.

- Appointment Management
- Campaign Management
- Case and Form Management
- Communications Centre

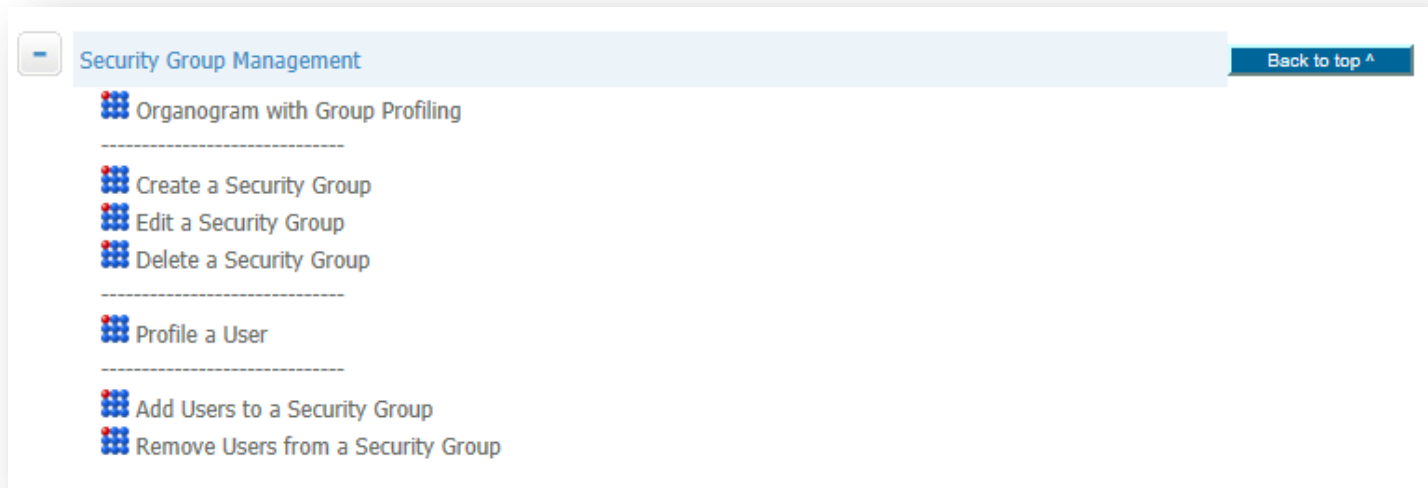
- Conference Centre
- Control Bar
- Data Profiling
- eCourse

- Inbound Contact
- Information Centre
- Outbound Contact
- Quality Assurance
- Testing Centre

The logo for Business eXpress, featuring the word "Business" in black, "e" in green, and "Xpress" in blue. The "X" is a large, stylized letter.

Business eXpress

Location

A screenshot of a software interface showing a "Security Group Management" menu. The menu is a light blue bar with a minus sign icon on the left and a "Back to top ^" button on the right. Below the bar, a list of options is displayed, each preceded by a small icon of four colored squares (red, blue, green, yellow) arranged in a 2x2 grid. The options are: "Organogram with Group Profiling", "Create a Security Group", "Edit a Security Group", "Delete a Security Group", "Profile a User", "Add Users to a Security Group", and "Remove Users from a Security Group".

Security Group Management [Back to top ^](#)

- Organogram with Group Profiling
- Create a Security Group
- Edit a Security Group
- Delete a Security Group
- Profile a User
- Add Users to a Security Group
- Remove Users from a Security Group

The building and management of these groups will be done in System Access Management

This will not affect your **current** permissions

- However using the new security engine will fully replace the existing permissions engines on the 1st of July 2012

This will not affect your **current** functional access

- Functional access to subsections of each module of BE will remain exactly the same. It is access to content **ONLY** that will be effected.